



The Charolais Pavilion,
Avenue M,
Stoneleigh Park, Kenilworth,
Warwickshire, CV8 2RG
t: 024 76 697731
f: 024 76 697776
www.rugbyfarmersmart.com
Holding No. 43-139-8013

Office Hours: Monday to Friday – 9.00am to 5.00pm
Opening Time: Gates open at 5.30am until further notice

Market Reports For Monday 25th November 2019

Market At A Glance

Prime Steers to 186p/kg & £1131
Prime Heifers to 206p/kg & £1294
Prime Bulls to 140p/kg & £798
OTM Cattle 150p/kg & £1044
Prime Lamb SQQ 191p/kg (1876)
Prime Lambs to 221p/kg & £108
Store Lambs to £78.50
Calves to £279 (115)
Ewes to £110 (651 Avg £70)

Friday 29th November
Store Cattle Fair & Store Lambs

Monday 2nd December
Christmas Primestock Show

Catalogues & Entry Forms available by post, email or on the website
www.rugbyfarmersmart.com ~ admin@rugbyfarmersmart.com

CATTLE: 146 Forward

Prime Cattle-22

A much shorter show than in previous weeks, with quality very scarce on the ground.

Steers and Bulls-7

Quality short in the Steers with a top PPK to RW Cross & Partners selling Angus x to 186PPK or £1131, with Bulls to 140PPK for traditional Herefords from Messrs Dickin.

Heifers-15

Some proper Heifers on show for us today, with butchers fit for the right goods. Top PPK to 206 for Blues from Parry Walters with a top gross of £1294 for his Limousins. Butchers struggling with heavier Heifers, with some today proving too big.

OTM-9

Another good show of OTM Cattle, with Steers to 150PPK or £1044 from TG White, while cows sold to 121 PPK from JMT Engineering LTD.

Auctioneer: Martin Lloyd

CALVES: 115 Forward

A mixed show of quality today with very few showstoppers. The majority of the entry today made up of Angus sired calves.

Best end Continentals in short supply today with a Top price of £279 for Charolais x Bulls from GE Pountney, with Blues to £272 from KC & DA Hughes. Rearing Continentals saw Bulls trading between £110 and £150, with Heifers trading £90-£120.

The Native section making up the most part of the entry, with top price Angus x Bulls to £248, with others to £215. Best Angus Heifers to £130. Rearing Bulls around the £100 mark with Heifers £60-£80.

Next Sale

60 Angus x Weaned and Part Weaned Calves

Auctioneer: Martin Lloyd

STEERS & BULLS:			
Top prices per head			
Aberdeen Angus	608kg	£1131	R W Cross & Partners
Aberdeen Angus	628kg	£1105	R W Cross & Partners
Simmental	679kg	£1059	JMT Engineering Ltd
Simmental	569kg	£967	JMT Engineering Ltd
Simmental	543kg	£918	JMT Engineering Ltd
Top prices per kilo			
Aberdeen Angus	608kg	186ppk	R W Cross & Partners
Aberdeen Angus	628kg	176ppk	R W Cross & Partners
Simmental	569kg	170ppk	JMT Engineering Ltd
Simmental	543kg	169ppk	JMT Engineering Ltd
Simmental	468kg	159ppk	JMT Engineering Ltd

HEIFERS:

Top prices per Head			
Limousin x	647kg	£1294	DTP & PA Walters
Limousin	605kg	£1240	DTP & PA Walters
British Blue	600kg	£1236	DTP & PA Walters
British Blue	797kg	£1132	WR Lea & Son
Simmental	661kg	£1097	JMT Engineering Ltd

Top prices per Kilo			
British Blue	600kg	206ppk	DTP & PA Walters
Limousin	605kg	205ppk	DTP & PA Walters
Limousin x	647kg	200ppk	DTP & PA Walters
Limousin x	538kg	188ppk	R J Wright
Limousin x	516kg	171ppk	JMT Engineering Ltd

**Please could all vendors book in stock, either by a quick call,
text or email Thank You!**

Office: 02476697731

Email: admin@rugbyfarmersmart.com

Tom: 07774723758

SHEEP:2970

Prime Lambs: 1876 Forward SQQ 191p/kg

A more difficult days trading as reports of a slow in trade on the continent pecculated through. Discussions seem to suggest that a surge in numbers exported last week, as farmers clear wet fields, has saturated the European market. This will surely put itself right with time. An SQQ of over 191p/kg a tribute to our buyers and equal to 407p/kgdw despite a generally poor yarding of lambs made up of the massively fat or those which would be half meat stores. Trade harder to hold but as ever best finished and bred lambs wanted with Export lambs topping at 221p/kg for 39kg Blue Texels from SLAM farming whilst 215p/kg took some shape from Martin Woodward at 40kg with 44kg from Humphrey Livestock at 211p/kg. Heavies a nice trade for meat and sold to 202p/kg at 48kg from R & B Smith with 46.5kg to 201p/kg from Amorise Farming with others 200p/kg. In the lump Export weight lambs making £93 at 44kg from Humphrey Livestock with 45kg from B C Burton and Amorise Farming to £92. Heavies topping at £108 for 60kg from Culworth Grounds for a pen full with 59kg from SM & JM Lambert to £103. R & B Smith £102, £102, £100 and £99 for 58 and 52kg.

Trade following simple Economic curves. Next week sees the Christmas show week with this years Charity the Poppy Appeal and Lord Lycester Hospital. Come and join in.

Auctioneer: Tom Wrench

Prime Lambs : under 45.5kg SQQ 191p/kg			
Per Kilo			
Texel x	39.00kg	221ppk	S Mockler
Charolais x	40.00kg	215ppk	M J Woodward
Texel x	38.00kg	211ppk	R J Heckford
Beltex x	44.00kg	211ppk	Humphrey Livestock
Beltex x	35.00kg	211ppk	Pritchett Farms

Per HEAD			
Beltex x	44.00kg	£93.00	Humphrey Livestock
Beltex x	45.00kg	£92.00	B C Butron
Texel x	45.00kg	£92.00	Amorise Farms Ltd
Beltex x	45.50kg	£91.00	B C Burton
Beltex x	44.00kg	£90.00	B C Burton

Prime Lambs: OVER 45.5kg			
Per kilo			
Beltex x	48.00kg	202ppk	R & B Smith
Texel x	46.50kg	201ppk	Amorsie Farms Ltd
Texel x	46.50kg	200ppk	Amorise Farms Ltd
Beltex x	47.50kg	196ppk	Humphrey Livestock
Texel x	48.00kg	196ppk	Amorise Farms Ltd

Per HEAD			
Texel x	60.00kg	£108.00	Culworth Grounds Farm Partnership
Texel x	59.00kg	£103.00	SM & JM Lambert
Texel x	58.00kg	£102.00	R & B Smith
Texel x	71.00kg	£102.00	R & B Smith
Texel x	67.50kg	£100.00	R & B Smith

Cull Ewes: 651 Forward

A few less about but a straight trade for all but the fat Ewes. Fat very hard to sell and today often Vendors perplexed that their last pens made more than their heaviest ewes. Simply fat is unsaleable.

An Avg over £70 for a mainly Mule yarding shows the trade but simply put lean shaped ewes very dear. Top today to C W Thomas with his two leanest Ewes at £110 which if they had been a grade leaner would have made £135 plus. Messrs Kingston saw Texels to £109 and T H Morris & Sons £108.50 with Messrs Kingston also £106. Suffolks to £96 from Will Gaydon and £93 from H L Goode & Son. Mules very dear today and selling to £71 from Mark Lambert with others from Norfolk taking £69.50. Generally Mules trading £62 to £69 if fit and not fat.

Next week we sell the Ewes in two Tranches to facilitate the show. Seeing the Ewes first sold at 9.30 until 10.20 and then completed at approximately 2pm. See you then

Auctioneer: Tom Wrench

Charollais x	£110	C W Thomas	Texel x	£100	Townshend Partners
Texel x	£109	RJ & KM Kingston	Texel x	£98	G L Woodward
Texel x	£108.50	T H Morris & Sons	Charollais x	£97	C W Thomas
Texel x	£106	RJ & KM Kingston	Suffolk x	£96	W Gaydon
Charollais x	£100	C W Thomas	Suffolk x	£95	T H Morris & Sons

Store Lambs: 443 Forward

A nice entry of stores today sold to a blistering trade. Top from Kath Attfield with Ram lambs to £78.50, with JP Willison selling big pens of Suffolk x to £78. Shorter term lambs all £70+ with mid-term better bred lambs actively £65-£70. Harder sorts around the £60 mark with long term hard bred type £48-£52.

This Friday sale of Store Lambs through the cattle ring, extra entries encouraged.

Auctioneer: Martin Lloyd

RUGBY PRIMESTOCK SOCIETY

46th CHRISTMAS SHOW & SALE

Monday 2nd December 2019

HOME BAKING & BUTCHERS CLASSES

To be held in the Board Room in the Jersey Building.

Entries £3 per class. Entries can be made on the day.

All entries will be retained by the Society and auctioned with the proceeds being donated to the Chairmans Charity 2019.

Home Baking & Butchers Classes to arrive by 11:00am

Judging to commence at 12:00pm

Class A: The Best Fruit Cake - Open Class.

Home baking - cake to follow recipe & to be approx 8 inches in diameter.

Prize Money: 1st £15 2nd £10 3rd £5

Class B: The Best 6 Mince Pies- Open Class.

Home baking - 6 pastry topped mince pies.

Prize Money: 1st £15 2nd £10 3rd £5

Class C: The Best Selection of Pork Sausages - Butchers Class

Please provide 6 cooked and 6 uncooked sausages.

Please provide a description of what your entry contains.

Sausages as would be sold in your shops.

Prize Money: 1st £15 2nd £10 3rd £5

CLASS D: Best Two Commercial Pork Pies - Butchers Class

.454kg (1lb) + or - 10% (0.409-0.499kg)

As would be sold in your shops.

Prize Money: 1st £15 2nd £10 3rd £5

<u>Name:</u>	
<u>Address:</u>	
<u>Tel No:</u>	
<u>Entry Fee Enc.</u>	

Dear Rugby Market Supporter

On the 2nd December our annual Primestock Show Takes Place. This puts a huge workload on our regular staff and I would ask you to bear with us as sorting and weighing take longer in the sheep section. Ewes will be sold from 9.30 till 10.15 am with all those not sold in this time being sold after the show cattle. There will be something happening all day.

Our charities this year are the Poppy Appeal and a local charity which is the Lord Leycester Hospital in Warwick which also helps elderly Armed forces personnel. There will be a pig roast and a lamb roast in aid of the charity and I would ask you to give generously. Emma will be selling raffle tickets, the draw take place at the dinner on 7th Dec.

Our speaker this year is Clive Davies who commentates at the English Winter Fair at the cattle ring.

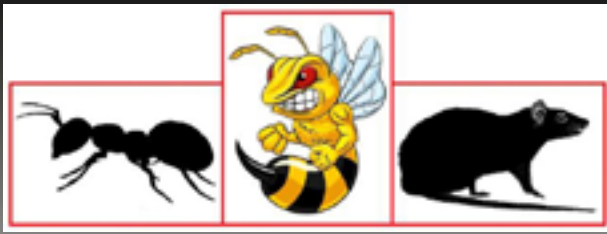
There are a few tickets left.

Again if you would please be patient on show day it would be much appreciated by all.

Thankyou

Richard Ellis

Chairman Primestock show



RDB Pest Control

Reliable | Trustworthy | Fast | Effective
Competitive Prices

Ryan Brunt

07922 091 459

rdbpestcontrol@outlook.com

Why You Should Choose Us

- ✓ Cater for Red Tractor and Farm Assurance Schemes
- ✓ Wide ranging experience on Farms with existing agricultural customers
- ✓ Member of Warwickshire Young Farmers
- ✓ Fully qualified - Level 2 RSPH in Pest Control
- ✓ Trustworthy and security vetted
- ✓ Prompt, reliable fast response

A selection of sites where I have experience:

Police Sites • Local Airport • Farms • Warehouses • Offices
• Industrial Estates • Food Premises • Private Houses
Country Estates • Building Sites • Local Councils • Schools •
Day Nurseries • Care Homes

!LAST FEW TICKETS REMAINING!

Rugby Primestock & Rugby Farmers Annual Dinner



Saturday 7th December 2019

7:30pm for 8:00pm

***Stoneleigh Deer Park Golf Club
Coventry Rd, Stoneleigh, Warks CV8 3DR***

£30 per person

£25 for paid Society members.

**SPECIAL
CHARITY
AUCTION**

**TICKETS
SELLING
FAST!**

*Featuring
Guest Speaker Mr Clive Davies
&
Back by popular demand
Magician Angus Baskerville*

Good Food, Good Friends... Great Evening!

Enquires via Show Secretary Steph Baker @ rugbyprimestocksociety@outlook.com /
07762351723

Collie X Kelpie pup for sale, 6 months old, keen to work. Both parents work sheep and cattle. Microchipped.
Contact Peter, 07484121854

**Agricultural Services available including Muck Spreading,
Ploughing, Cultivation and much more!**

Call Will for more info: 07795632527

Always Happy To Help!

Sheep Grazing Wanted

Please contact Stuart Wise 07880742082 or Lesley 07564645504

**Call Tom on 07807 693858, 01926 814731
or email to tom.reeve@aol.co.uk**

Tom Reeve Contracting



Domestic, Agricultural and Commercial fencing.

Hedge coppicing, laying and planting.

Slot seeding for grass, arable, HLS and Game cover.

Slitting, Flail topping and much more.

For Sale

Beltex Shearling Ewe, possibly in lamb to Texel

Call Roy 07572003088

HARRIS & CLARKE
CHARTERED ACCOUNTANTS

...Specialising In Agriculture...

**Our team of staff has many years of
experience in dealing with the accountancy
and taxation affairs of farmers, landowners
and agricultural contractors**

**For further information or a free no
obligation meeting please contact**

John Harris

7 Billing Road, Northampton, NN1 5AN
Telephone 01604 622274
www.harrisandclarke.co.uk



For Sale

Good round bale haylage
Call Jane 07754488292

Wanted

Full-time worker required for sheep and cattle farm also some tractor work.
Good rate of pay for a reliable, experienced person.
Stratford Upon Avon area.
Call Steve on 07771560251

Hedge Cutting Contracting Service
Call Tom Lambert on 07824489716

For Sale

2 Pedigree Aberdeen Angus Stock Bulls
only selling as back on daughters
Call 07774723758

Wanted

Sheep & Cattle Grazing
Call 07760266701

Farm Insurance Specialists

Call 01865 844994

Visit www.county-insurance.co.uk



County
Insurance
Services

County Insurance Services, County House, Grove Court, Leamington Spa, Warwick, CV34 4JG. County Insurance Services is authorised and regulated by the Financial Conduct Authority, a FCA 50727.

JMT ENGINEERING REQUIRE CLASS 1 & 2 Lorry drivers.
Please ring Mark on 07970382951 or 01926 614345 for details"

T.A.R HIRE

- **FOR HIRE:**
- **10 & 14 TON REAR MUCK SPREADERS**
- **12 TON TRAILERS WITH SILAGE SIDES**
- **ROAD SWEEPER**
- **FLAT TRAILERS**
- **GRASS TOPPERS**
- **CONTRACT MUCK SPREADING SERVICES**

CONTACT:

DAVENTRY (ROB) - 07801791212

HINCKLEY (ALAN) - 07802951179



**FINISHING CATTLE?
GROWING CATTLE?
FEEDING SHEEP?
DO YOU WANT
HIGH PERFORMANCE
COST EFFECTIVE
FULLY ASSURED
AND
COMPLETE FEEDS?**

THEN CONTACT

BERRYSTOCK FEEDS

TEL: 01788 890320

E-MAIL: john@berryfieldsfarm.co.uk

www.berrystockfeeds.co.uk

BERRYFIELDS FARM
DAVENTRY
NN11 8NP



WE COVER SMALL FARMS, LARGE FARMS AND EVERYTHING IN BETWEEN

**From sheep farmers to arable farmers.
Flower growers to poultry farmers.**

We're proud to insure over 70% of UK farms with our Farm Select insurance. But we want more farms to benefit from our great cover and local service. That's why we've introduced Farm Essentials insurance - designed to meet the needs of smaller farms.

As your local agency, we are close by and can provide expert advice and hands-on support when you need it.

Call **Coventry Office**
on **02476 444519**

NFU Mutual, 6 Eastwood Business Village,
Harry Weston Road, Binley Business Park,
Coventry, CV3 2UB



NFU Mutual
INSURANCE | PENSIONS | INVESTMENTS

Rugby Farmers Mart Ltd

Forthcoming Sales 2019

**Friday 29th November
Store Cattle Fair & Store Lambs**

**Monday 2nd December
Christmas Primestock Show**

Find us on Social Media



@rfm_ltd



rugbyfarmersmartltd

Vendors who are wishing to sell stock please feel free to contact:

Tom Wrench - 07774 723758

Martin Lloyd - 07972 375351

Craig Thompson - 07901 787636

Steve Martin - 07960 085950

who will gladly make
A FREE ON FARM VISIT & VALUATION